

Psalm 135

Plagal of Byzantine Tone One

Cantor:



O give thanks un-to the Lord for He is good. Al-le-lu - ia;

Refrain:



for His mer - cy en-dur - eth for-ev-er. Al-le lu - ia.



O give thanks un-to the God of gods. Al-le-lu - ia;



O give thanks un-to the Lord of Lords. Al-le-lu - ia;

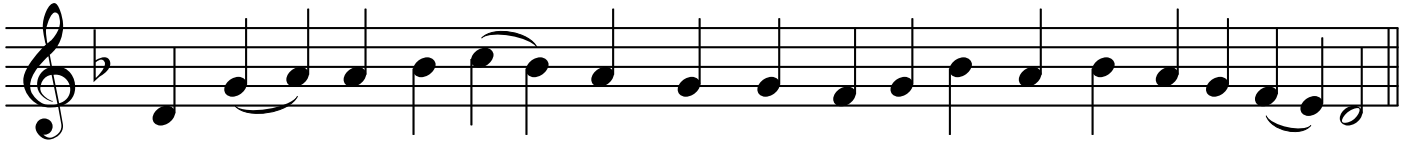


To Him Who a-lone has wrought great won - ders. Al-le-lu - ia;



To Him Who made the heav - ens with un-der-stand - ing. Al-le-lu - ia;

Psalm 135



To Him Who es-tab - lished the earth up-on the wat-ers. Al-le-lu - ia;



To Him Who a-lone has made great lights. Al-le-lu - ia;



The sun for do-mi - nion of the day. Al-le-lu - ia;



The moon and the stars for do-mi-nion of the night. Al-le-lu - ia;



To Him Who smote E-gypt with their first born. Al-le-lu - ia;



And led forth Is-ra-el out of the midst of them. Al-le-lu - ia;

Psalm 135



With a strong hand and a lof - ty arm. Al - le - lu - ia;



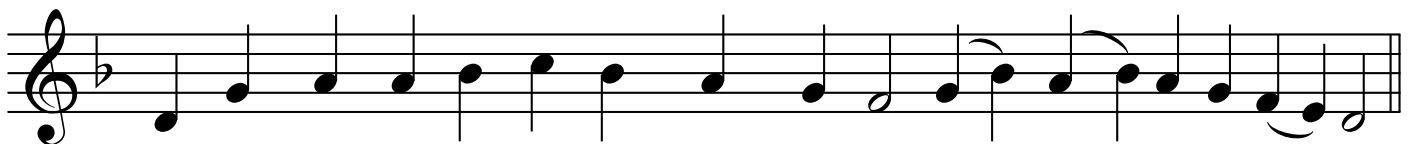
To Him Who di - vi - ded the Red Sea in - to parts. Al - le - lu - ia;



And led Is - ra - el through the midst there - of. Al - le - lu - ia.



And ov - er - threw Pha - raoh and his host in the Red Sea. Al - le - lu - ia.

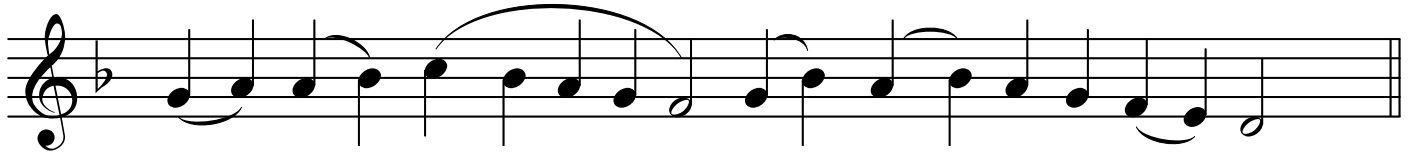


To Him Who led His peo - ple through the wil - der - ness. Al - le - lu - ia;



To Him Who smote great kings. Al - le - lu - ia;

Psalm 135



And slew might - - - y kings. Al-le-lu - ia;



Se - on, king of the A - mo - rites. Al-le-lu - ia;



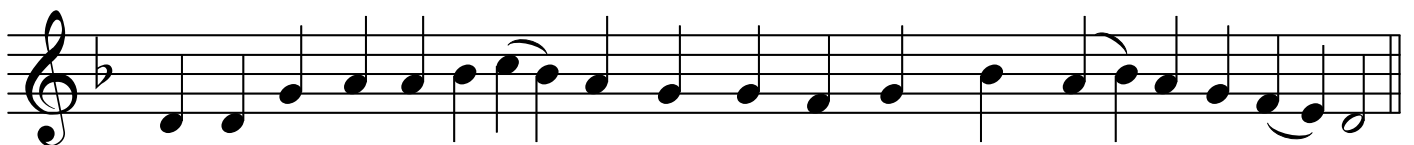
And Og, king of the land of Ba - san. Al-le-lu - ia;



And gave their land for an in-her - i - tance. Al-le-lu - ia;

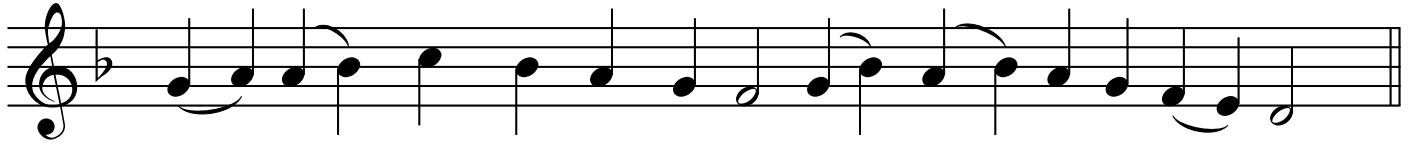


An in-her - i - tance for Is - ra - el, His ser - vant. Al-le-lu - ia;



For in our hu-mi-li-a - tion the Lord re-mem-bered us. Al-le-lu - ia;

Psalm 135



And re - deemed us from our en - e - mies. Al - le - lu - ia;



He Who gives food to all flesh. Al - le - lu - ia;



O give thanks un-to the God of Heav - en. Al - le - lu - ia;



O give thanks un-to the Lord, for He is good. Al - le - lu - ia;



for His mer - - - cy en - dur - eth for - ev - er.

rit.



Al - le - lu - - - ia.